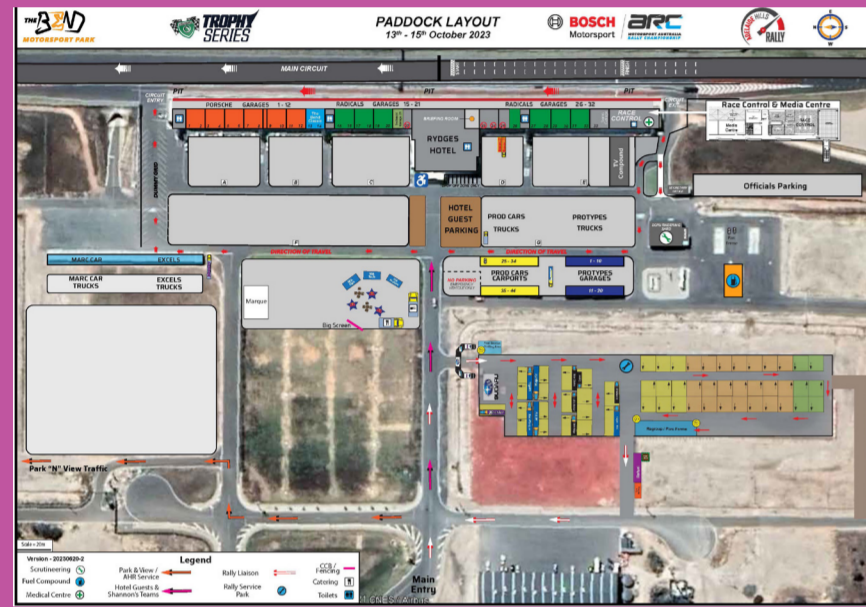




Ultimate Motorsport Events would like to acknowledge the Traditional Land Owners of the areas and also to thank the Alexandrina Council, Mid Murray Council and the Mt Barker Council for their support, without it we would not be able to run the Adelaide Hills Rally.

Service Park

Service Park and Rally Headquarters are at The Bend Motorsport Park, Tailem Bend. There will also be remote Service Parks at Mt Barker, Strathalbyn and the Mid Murray Motorplex. Please come along and look at the cars and crews at close quarters and enjoy the festive activities.



PowerPlay - the next level in excitement for indoor kart racing - now with electric karts. Instant Power equals Instant Fun. Look out for PowerPlay with its unique karts and track design.



Saturday Night action at The Bend

Following a day of competition on the stages in the Adelaide Hills, the crews will return to The Bend Motorsport Park for two side-by-side, match racing runs of the twisty Stadium Circuit, complete with water splash. Adrenaline flows and the red mist descends as competitors now try to beat each other on track as well as on the clock. Come and watch all the action from 6.00pm until 8.00pm.

POWERPLAY ADELAIDE HILLS RALLY



SPECTATOR GUIDE



13-15 OCTOBER 2023

ROUND 5

BOSCH MOTORSPORT AUSTRALIA RALLY CHAMPIONSHIP

MOTORSPORT IS DANGEROUS

Motorsport activities are inherently dangerous recreation activities and there is significant risk of injury, disability or death. If you do not wish to be exposed to such risks then you should not attend or participate in the Motorsport Activities.

Acknowledgment of Risks

I acknowledge that the risks associated with attending or participating in Motorsport Activities include but are **not limited** to the risk that I may suffer harm as a result of:

- motor vehicles (or part of them) colliding with other motor vehicles or persons or property;
- other participants acting dangerously or with lack of skills;
- high levels of noise exposure;
- acts of violence and other harmful acts (whether intentional or inadvertent) committed by persons attending or participating in the event; and
- the failure or unsuitability of facilities (including grandstands, fences and guard rails) to ensure my safety.

Exclusion of Liability, Release and Indemnity

In exchange for being able to attend or participate in the Motorsport Activities, I will and agree to:

to release Motorsport Australia and the Entities to the extent that any or all of them are providing Recreational Services from all liability for:

- my death;
- any physical or mental injury (including the aggravation, acceleration or recurrence of such and injury);
- the contraction, aggravation or acceleration of a disease including but not only COVID-19;
- the coming into existence, the aggravation, acceleration or recurrence of any other condition, circumstance, occurrence, activity, form of behaviour, course of conduct or state of affairs:
 - that is or may be harmful or disadvantageous to me or the community; or
 - that may result in harm or disadvantage to the community;
- any claim for ant cost and expenses I may incur as a consequence of any of the above activities arising from my participation in or attendance at the Motorsport Activities;
- to indemnify and hold harmless and keep indemnified Motorsport Australia and the Entities to the maximum extent permitted by law in respect of any Claim by any person; and
- to attend at or participate in the Motorsport Activities at my own risk.

Part text from Motorsport Australia Risk Warning, Disclaimer and Indemnity, for the full document visit:

<https://motorsport.org.au/events/disclaimers>

Spectator Viewing - Saturday October 14



Callington Back - SS 3 & 5
First Car from start - 9.23am & 11.24am

From Summit Rd (Mt Barker Springs) travel down Petwood Rd for 6.2km.



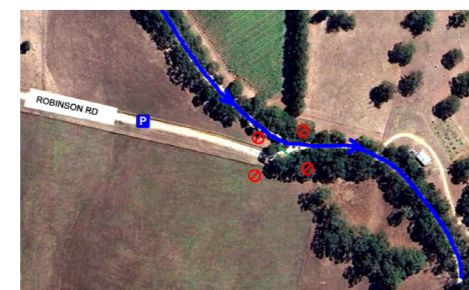
The Glen - SS 4 & 6
First Car from start - 10.06am & 12.07pm

Turn onto Mills Rd from the Old Princess Hwy (1.7km North of Kanmantoo). 650m follow Mills Rd round the 90° bend, another 90° bend after 2km, then park after another 2.3kms.



Bugle Ranges - SS 7 & 10
First Car from start - 1.10pm & 2.57pm

Turn onto Native Rd (Mt Barker) from Flaxley Rd, head South East on Native Rd for 350m, stay right on Native Rd, 1km continue straight onto Merritt Rd, 1.6km cross Dunn Rd onto Bonython Rd for 1.2km



Meadows - SS 8 & 11
First Car from start - 1.35pm & 3.22pm

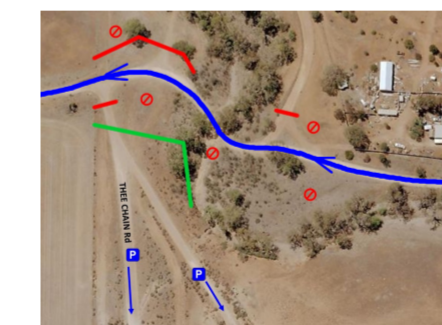
Fromm Morris Rd (Meadows) turn into Robinson Rd and follow it for 1.5kms.

Spectator Viewing - Sunday October 15



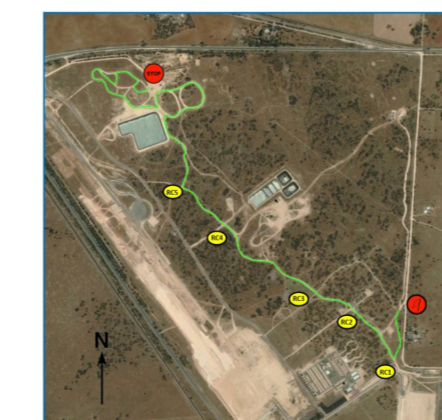
Mid Murray Motorplex - SS 17 & 22
First Car from start - 9.37am & 11.48pm

Starick Rd (Cambrai) off Angus Valley Rd.



Pine Hut - SS 18 & 21
First car from start - 10.37am & 12.48pm

From the main street of Cambrai travel North-West on Curio Rd for 500m, continue straight onto Gershwitz Rd, after 2.9km continue straight on through intersection for a further 500m and turn right into Three Chain Rd and travel 2.9km.

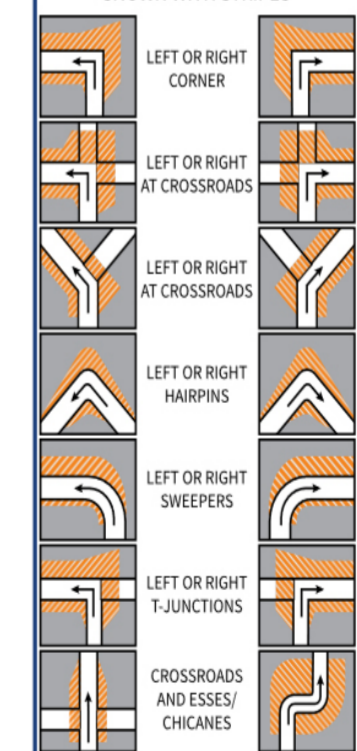


Power Stage - SS 25
First car from start - 4.30pm

Enter off the Mallee Hwy, 280m East of the Dukes Hwy/Mallee Hwy intersection and follow the signs and park as directed

THE FOLLOWING DIAGRAMS SHOW AREAS THAT ARE CONSIDERED TO BE UNSAFE

NO STANDING AREAS ARE SHOWN WITH STRIPES



Use this guide to ensure safe viewing in areas outside designated spectator points

SAFE SPECTATORS...

ALWAYS...

- Stay ALERT and expect the unexpected
- Stand in a safe location
- Consider your own safety and that of others at all times
- Stand where you can see the competing cars coming and going
- Listen for approaching cars
- Remain alert
- Leave yourself room to move away quickly
- Keep children under close supervision
- Leave pets at home, please **NOT** bring them to a spectator area
- Obey rally officials
- Help the officials to run a safe stage
- Take your rubbish home with you, keep our forests clean
- Assist our officials to run a safe event

KNOW THAT...

- The unexpected can happen

PROTECT...

- Yourself
- Others around you
- Other people's property
- Wildlife and flora

SAFETY IS OUR #1 PRIORITY

SAFE SPECTATORS...

NEVER...

- Stand in prohibited areas (study the spectator viewing diagrams)
- Stand or sit close to the edge of the road
- Stand or sit below the edge of the road or in gutters & culverts
- Stand in a run-off / escape route for the competing cars
- Sit down at a location on the same level as the cars - you need to be standing so you are able to move away quickly if necessary
- Remove rally signs or arrows, or stand in front of them
- Be distracted - always face toward the competing cars
- Stand or Cross a road that is officially closed
- play games with your safety, the competitors safety, or the safety of those around you
- Stand in front of fences or objects that may prevent you from moving quickly

SAFETY IS OUR #1 PRIORITY

RALLY EMERGENCY - 0432 226 681 OR 000



When spectating at any of the Spectator Points please DO NOT climb over fences or enter private properties.

All information in this Spectator Guide was correct at the time of printing and may change without notice.



SUBARU
Confidence in Motion



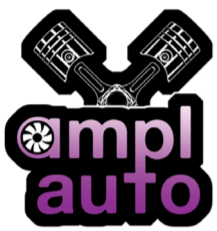
COPYWORLD

AUTOSPORT
autosport.com.au

workzone
Traffic Control



READ BROTHERS



CE&A
MARINE ENGINEERING

asp

Application
Service Provider



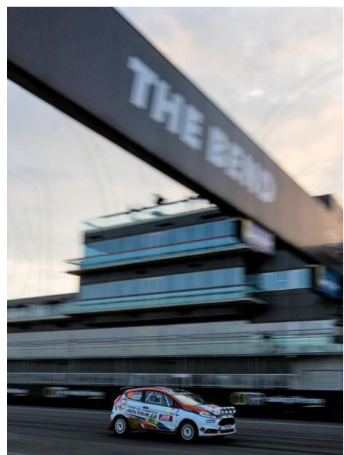
Photographs by TwinCam Media



Spectator Viewing - Friday

The Bend Motorsport Park, Tailem Bend from 5.45 pm to 8.00 pm

Stadium Super Special Stage on the Go Kart Track



Spectator Viewing - Saturday

Callington Back 1 - SS 3
First Car from start - 9.23 am



Callington Back 2 - SS 5
First car from start - 11.24 am



The Glen 1 - SS 4
First car from start - 9.46 am

The Glen 2 - SS 6
First car from start - 12.07 pm



Bugle Ranges 1 - SS 7
First car from start - 1.10 pm

Bugle Ranges 2 - SS 10
First car from start - 2.57 pm



Meadows 1 - SS 8
First car from start - 1.35 pm

Meadows 2 - SS 11
First car from start - 3.22 pm



Spectator Viewing - Saturday Night

The Bend Motorsport Park - Tailem Bend Stadium Super Special Stages SS 13 and SS 14
First car 6.23 pm.

Spectator Viewing - Saturday Remote Service

In addition to the closed road special stages cars and crews can be viewed at work at the remote service in Mt Barker from 10.36 am and 12.37 pm, and at Strathalbyn from 2.08 pm



Mt Barker



Strathalbyn

Spectator Viewing - Sunday Remote Service

As well as the two special stages around the course at MMM two remote services will also take place there from 9.34 am and 11.47 am

Spectator Viewing - Sunday

Mid Murray Motorplex 1 (MMM) SS 17
First car from start - 10.05 am



Mid Murray Motorplex 2 - SS 20
First car from start - 12.18 pm



Pine Hut 1 - SS 18
First car from start - 10.39 am

Pine Hut 2 - SS 21
First car from start - 12.52 pm



Power Stage - SS25
First car from start - 4.30 pm



TWINCAM MEDIA